

GEMINI

Datasheet - PUBLIC OPERATIONAL CHARGING STATION



www.raedian.com



1. General

Charging connector

Type 2 socket with shutter

Authentication methods

RFID
OCPP Backend

HMI & indication

RGB LED ring per connector
3 Physical push buttons

Display

8-inch LED display, max. 800 nit,
1024x768

Nominal output voltage

Three phase: 230/400VAC \pm 20%

Maximum output power

Three phase up to 22x2kW

Earthing system

TN/TT

Protection

UVP, OVP, OCP, Relay Stuck, Over
Temperature

Residual current protection

Integrated 6mA DC per IEC 62955

Nominal frequency

50/60Hz

Metering accuracy

MID Certified Class B
 \pm 1% Accuracy

2. Connectivity

Vehicle communication

Mode 3 in accordance with IEC
61851-1 ed. 3 (2017)

RFID authentication

ISO/IEC 14443A/B, 13.56 MHz
Maximum length: 7 bytes

Connectivity to backend

Ethernet: RJ45
4G: LTE CAT I,
LTE-FDD: B1/3/5/7/8/20/28

Backend protocol

OCPP 1.6(JSON) 2nd edition

Connectivity to smart phone

Bluetooth
Wi-Fi AP, 2.4GHz, 802.11 b/g/n

SIM card

User SIM: Nano SIM, Settable APN
user name and password

Contactless payment

EMVCo. LI v3.0 Certified
Desfire protocol EV2/3
ISO18092: Support NFC Protocol

3. Load Management Options

- Dynamic Load Sharing between 2 connectors;
- Connect to Gemini Management Portal for Dynamic Load Balancing;
- OCPP backend load management.

4. Operating Conditions

Operating temperature

-30°C ~ 50°C with derating
mechanism(22kW*1, 11kW*2)
-30°C ~ 45°C with derating
mechanism(22kW*2)

Relative humidity

5% ~ 95%

Electrical safety class

Class I

Degree of protection (housing)

IP55

IK protection (mechanical impact)

IK10(Housing)
IK08(Display)

Operating altitude

2000m

Standby power

17.5W

Environmental conditions

Indoor / outdoor use

EMC Environmental conditions

Class B residential according to
IEC 61851-21-2

5. Mechanical

Mounting options

Wall mounted
Pedestal
Freestanding Pole

Material

Die-casting Aluminum Alloy

Casing (exterior) dimensions (H x W x D)

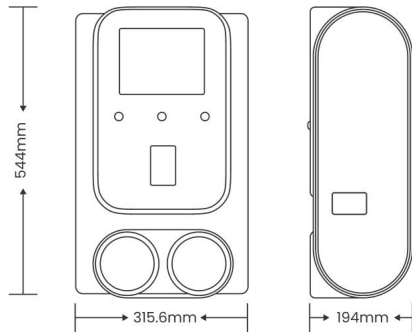
544 x 315.6 x 194 mm

Packaging dimensions (H x W x D)

710 x 430 x 335 mm

Weight

19.5 kg



6. Compliance

Safety

EN 61851-1, EN 62955, EN 62196,
EN 61439

EMC

EN 61851-21-2:2021
EN 301489-1 V2.2.3:2019
EN 301489-3 V2.3.2:2023
EN 301489-17 V3.2.5:2022
EN 301489-52 V1.2.1:2021

RED

EN 300328 V2.2.2:2019
EN 300330 V2.1.1:2017
EN 301908-1 V15.1.1:2021
EN 301908-13 V13.2.1:2022

Health

EN 62311:2008
EN 50663:2017
EN 61000-6-2:2016
EN 61000-6-3:2006

RoHS

Directive 2011/65/EU & (EU)2015/863
Annex II

MID

EN 50470-3, EN 62053-23

Eichrecht

Mess EV MessEG PTB-A 50.7



GEMINI

Rev 1.0 - 2024

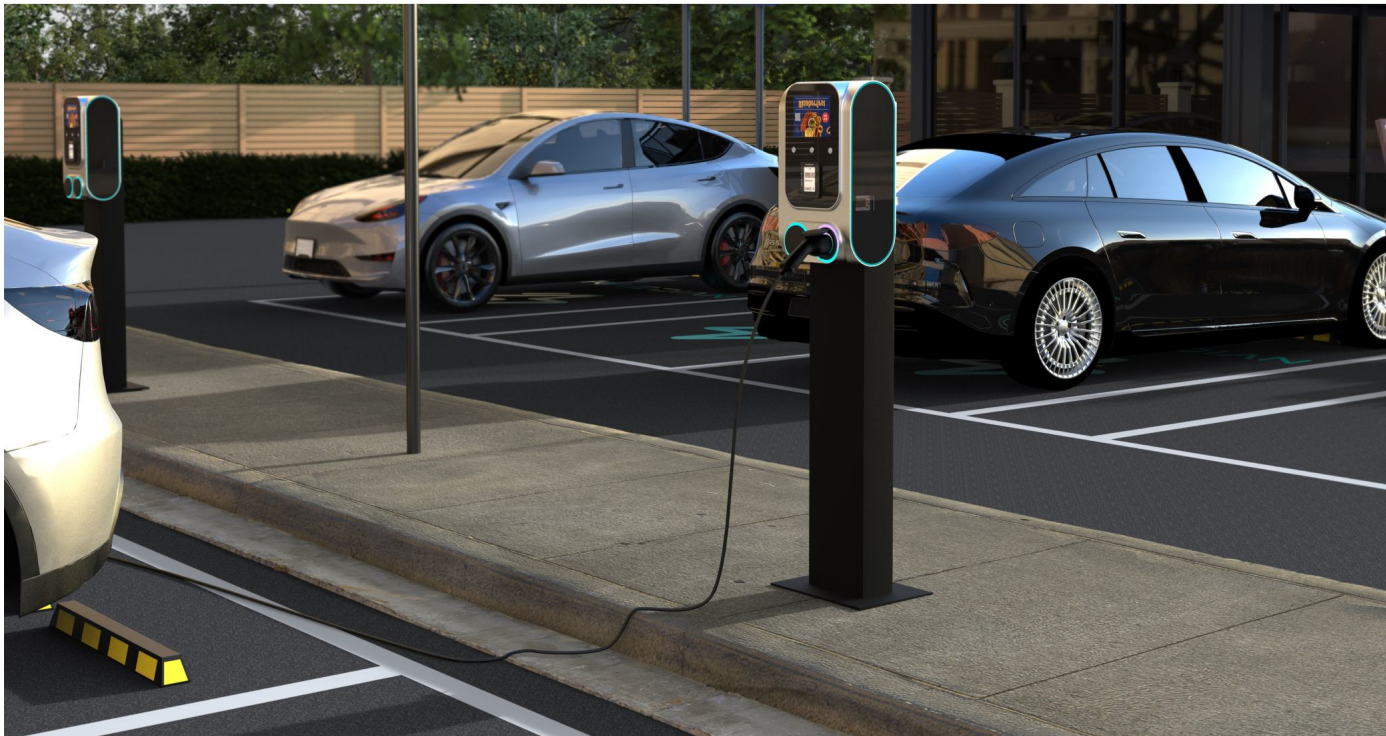
Product Variants

RFID

Model	Part no.	Description
<input type="checkbox"/> GEMINI 22WD-SS-M1-P0	9104000011111	22kW*2, Dual Socket with shutter, 4G/LAN, MID, RFID
GEMINI 22WD-SS-M2-P0	9104000012111	22kW*2, Dual Socket with shutter, 4G/LAN, PTB, RFID

Payter

Model	Part no.	Description
GEMINI 22WD-SS-M1-P1	9104000011121	22kW*2, Dual Socket with shutter, 4G/LAN, MID, Payter
GEMINI 22WD-SS-M2-P1	9104000012121	22kW*2, Dual Socket with shutter, 4G/LAN, PTB, Payter



GEMINI

Rev 1.0 - 2024

DISCLAIMER

- The reproduction, distribution and utilization of this document, as well as the communication of its contents to other parties without explicit authorization by RAEDIAN is strictly prohibited.
- The information in this document is for information purposes only, is provided as is, and may be subject to change without notice. RAEDIAN does not accept any liability for the correctness or completeness of the information and illustrations, and is not liable or responsible for your considerations, assessments, decisions or absence of such, or other use of the information in this document.

REMARK

1. All models listed are standard products. If you need products in other colors besides silver or have any customization needs, please feel free to contact RAEDIAN distributors or resellers.
2. The models marked with " " are in stock in EU. For further information like MOQ or other details, please feel free to contact RAEDIAN distributors or resellers.

Accessories



Pedestal Model 3 For Gemini

Pedestal for Gemini, distribution unit inside

Part no. 9006000020000



RFID Card

RFID Card, Business, 20 Cards

Part no. 9004000000001



Gemini Pole Model 1

Pole for Gemini, ECPC Unit included, MCB 100A, 5G35 power bus

Part no. 9006000030000



Charging Cable

T2 to T2, 5m, 1-phase, up to 32A(7kW)

T2 to T2, 7.5m, 1-phase, up to 32A(7kW)

T2 to T2, 5m, 3-phases, up to 32A(22kW)

T2 to T2, 7.5m, 3-phases, up to 32A(22kW)

T2 to T1, 5m, 1-phase, up to 32A(7kW)

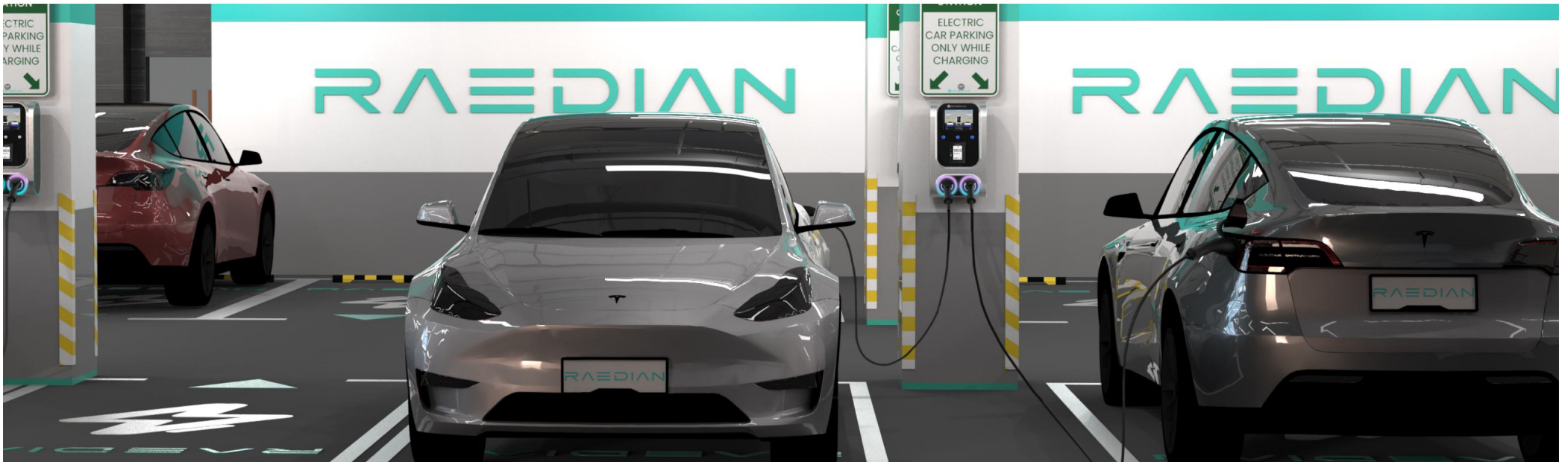
Part no. 9022000001111

Part no. 9022000001211

Part no. 9022000003111

Part no. 9022000003211

Part no. 9022000001112



GEMINI

Rev 1.0 - 2024